

# SEPOD P



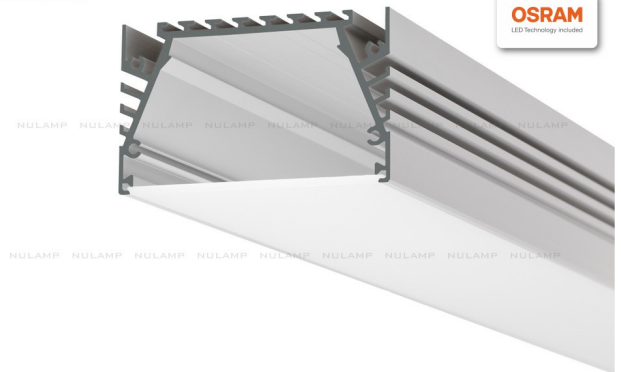
## NULAMP



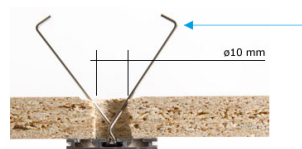
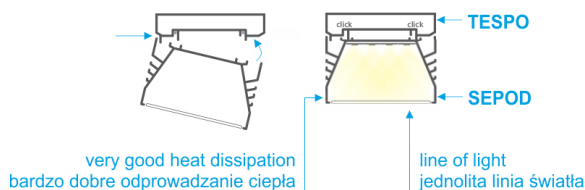
## NULAMP



## NULAMP



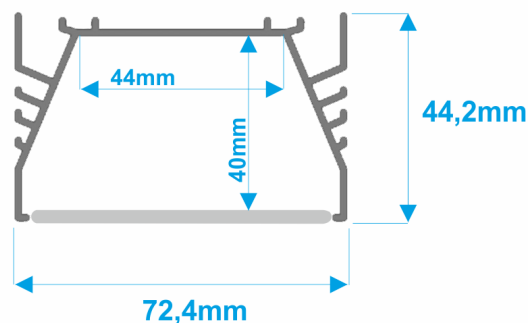
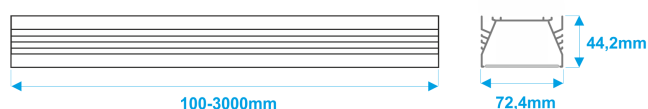
Safe and strong attachment  
Pewne i mocne zamocowanie



**GP**  
Surface spring  
Sprężyna powierzchniowa



**KMA**  
Spring for grooves  
Sprężyna do wpustów



Wide, surface mounted **high power LED plafond**. Energy-efficient linear LED lighting, with mounted three or more parallel light lines, designed for easy ceiling mounting with special screws or spacial component TESPO. A specially designed SZER cover (opal glass or frosted) made of polycarbonate, has a certificate that guarantees excellent resistance to atmospheric factors, UV radiation and flammability. Lamps of different lengths and wide range of application possibilities are available. **SEPOD P** is a utility lamp that can be used as industrial lighting, large office luminaire (100cm or more) and modern LED lighting for home and functional interiors (50cm).

- Ceiling lamp: **double anodized aluminium** - grey, can be painted in any colour from the NCS scale.
- Optional cover: frosted (glass efficiency 83%), or transparent (glass efficiency 95%): Makrolon®, of Bayer Polymers, **full certification**.
- Highest quality LED **OSRAM DURIS** E5 diodes.
- Control: **Dali, 1-10V, KNX, Fibaro**.
- Luminaires design enables **easy maintenance and replacement of light sources**.
- Lamps with a light source were produced in the **European Union**.
- Possibility to **modify a set of lamps for specific customer expectations** (size, colour housing, light colour, type of light source: RGB, RGBW, active white) - [UDESIGN custom](#).

**Installation of lights can be made by:**

- TESPO - special mounting strip,
  - using a specially dedicated surface spring - GP,
  - using a specially dedicated spring for grooves - KMA, the number of springs depends on the length of the lamp:
- < 1.4 m - 4 springs,
- < 2.4 m - 6 springs,
- < 3 m - 8 springs.

3 Year warranty	Length [cm]	Power [W]	Luminous flux [lm]	Colour temperature [K]	CRI [Ra]
SEPODP 100-66-___	<b>100</b>	66	6300 / 7050 / 7200	3000 / 4000 / 5000	>80
SEPODP 150-99-___	<b>150</b>	99	9450 / 10575 / 10800	3000 / 4000 / 5000	>80
SEPODP 200-132-___	<b>200</b>	132	12600 / 14100 / 14400	3000 / 4000 / 5000	>80
SEPODP 300-198-___	<b>300</b>	198	18900 / 21150 / 21600	3000 / 4000 / 5000	>80
5 Year warranty	Length [cm]	Power [W]	Luminous flux [lm]	Colour temperature [K]	CRI [Ra]
SEPODP 100-39-___	<b>100</b>	39	3720 / 4170 / 4260	3000 / 4000 / 5000	>80
SEPODP 150-58.5-___	<b>150</b>	58,5	5580 / 6255 / 6390	3000 / 4000 / 5000	>80
SEPODP 200-78-___	<b>200</b>	78	7440 / 8340 / 8520	3000 / 4000 / 5000	>80
SEPODP 300-117-___	<b>300</b>	117	11160 / 12510 / 12780	3000 / 4000 / 5000	>80

LAMP NAME- 100 - 13 -3000- M -DALI

1

2

3

4

5

1. Length [cm]

50, 100, 150, 200, 300 cm  
special order - 10-300 cm

2. Power [W]

13 W/m  
22 W/m  
special order - others

3. Colour temperature [K]

3000 K - warm  
4000 K - neutral  
5000 K - cold  
special order - 2700K, 6000K

4. Cover

T - transparent  
M - milk/frosted

5. Control

Fibaro  
1-10 V  
Dali  
KNX